

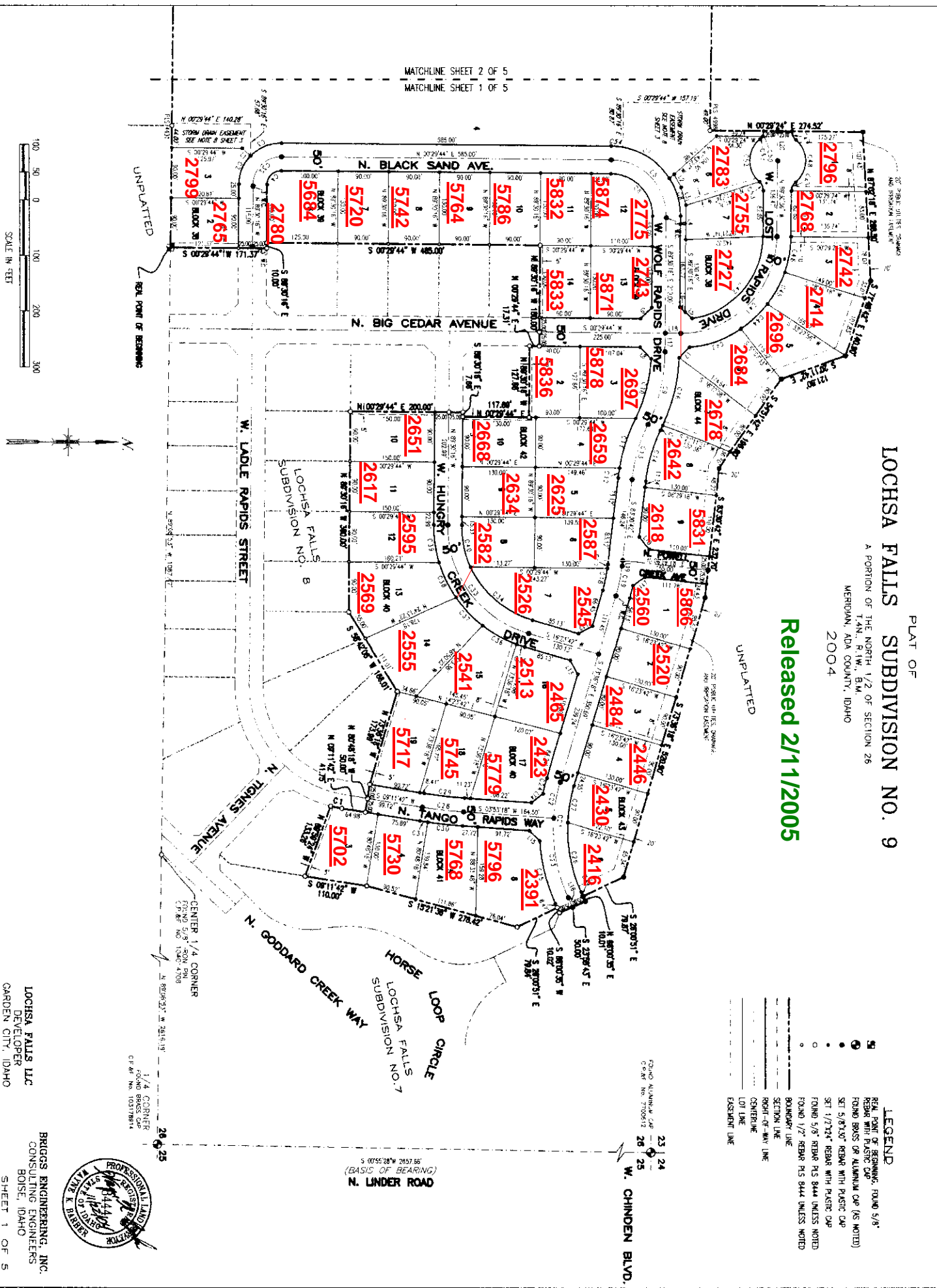
# LOCHSA FALLS SUBDIVISION NO. 9

A PORTION OF THE NORTH 1/2 OF SECTION 26  
T.4N., R.7W., B.1M.  
MERIDIAN, ADA COUNTY, IDAHO  
2004

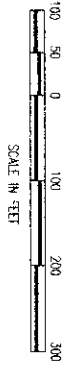
Released 2/11/2005

UNPLATTED

- LEGEND**
- REAL POINT OF BEGINNING, FOUND 5/8"
  - REBAR WITH PLASTIC CAP
  - FOUND BRASS OR ALUMINUM CAP (AS NOTED)
  - SET 5/8"x8" REBAR WITH PLASTIC CAP
  - SET 1/2"x2" REBAR WITH PLASTIC CAP
  - FOUND 5/8" REBAR P.S. 8444 (UNLESS NOTED)
  - FOUND 1/2" REBAR P.S. 8444 (UNLESS NOTED)
  - BOUNDARY LINE
  - SECTION LINE
  - RIGHT-OF-WAY LINE
  - CENTERLINE
  - LOT LINE
  - EASEMENT LINE



MATCHLINE SHEET 2 OF 5  
MATCHLINE SHEET 1 OF 5



LOCHSA FALLS LLC  
DEVELOPER  
GARDEN CITY, IDAHO



1/4 CORNER  
ROUND BRASS CAP  
C.P. REF. NO. 150178241

CENTER 1/4 CORNER  
ROUND BRASS CAP  
C.P. REF. NO. 150404708

BRIGGS ENGINEERING, INC.  
CONSULTING ENGINEERS  
BOISE, IDAHO  
SHEET 1 OF 5  
4262-21-06 2PW 11/20/04