

# LOCHSA FALLS SUBDIVISION NO. 12

A PORTION OF THE NE 1/4 OF SECTION 26  
T.4N., R.11W., B.M.  
MERIDIAN, ADA COUNTY, IDAHO

2005

Released 7/17/2005

W. CHINDEN BLVD

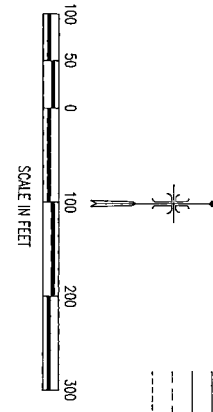
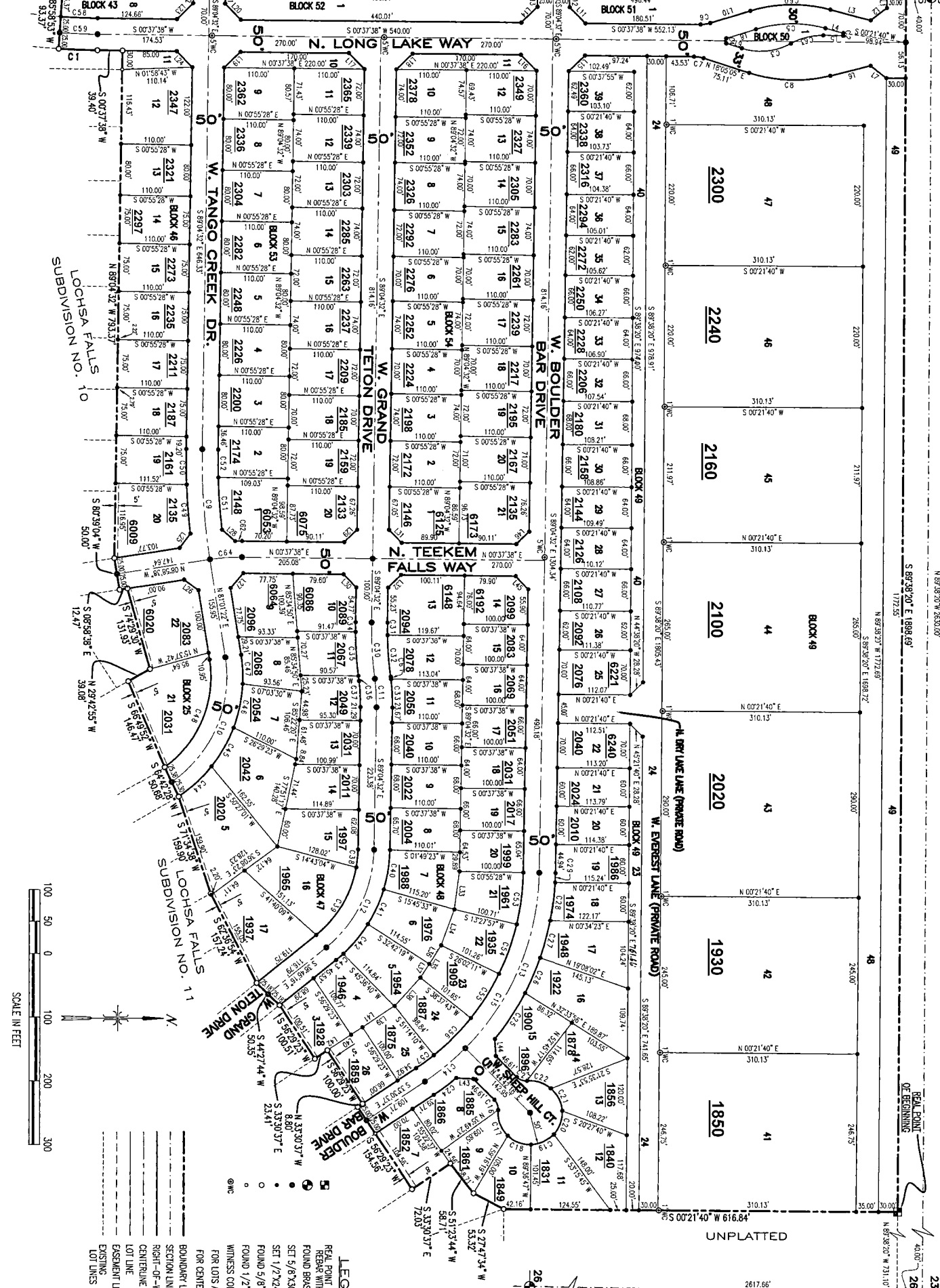
W. TANGO CREEK DR.

N. 1/4 CORNER  
C.P. No. 7706811

LOCHSA FALLS LLC  
DEVELOPER  
GARDEN CITY, IDAHO

BRIGGS ENGINEERING, INC.  
CONSULTING ENGINEERS  
BOISE, IDAHO

PK 92 P 10958



**LEGEND**

- REAL POINT OF BEGINNING, SET 5/8"X30" REBAR WITH PLASTIC CAP (AS NOTED)
- FOUND BRASS OR ALUMINUM CAP (AS NOTED)
- SET 5/8"X30" REBAR WITH PLASTIC CAP
- SET 1/2"X24" REBAR WITH PLASTIC CAP
- FOUND 5/8" REBAR - PLS 8444 OR NOTED
- FOUND 1/2" REBAR - PLS 8444 OR NOTED
- WITNESS CORNER - SET 1/2"X24" REBAR W/PC FOR LOTS AND SET 5/8"X30" REBAR W/PC FOR CENTERLINE/DISTANCE NOTED TO ACTUAL
- BOUNDARY LINE
- SECTION LINE
- RIGHT-OF-WAY LINE
- LOT LINE
- ESSENTIAL LINE
- EXISTING LOT LINES

PROFESSIONAL LAND SURVEYOR  
STATE OF IDAHO  
MAYBE K. BAUER