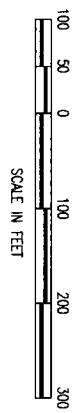


# PLAT OF LOCHSA FALLS SUBDIVISION NO. 11

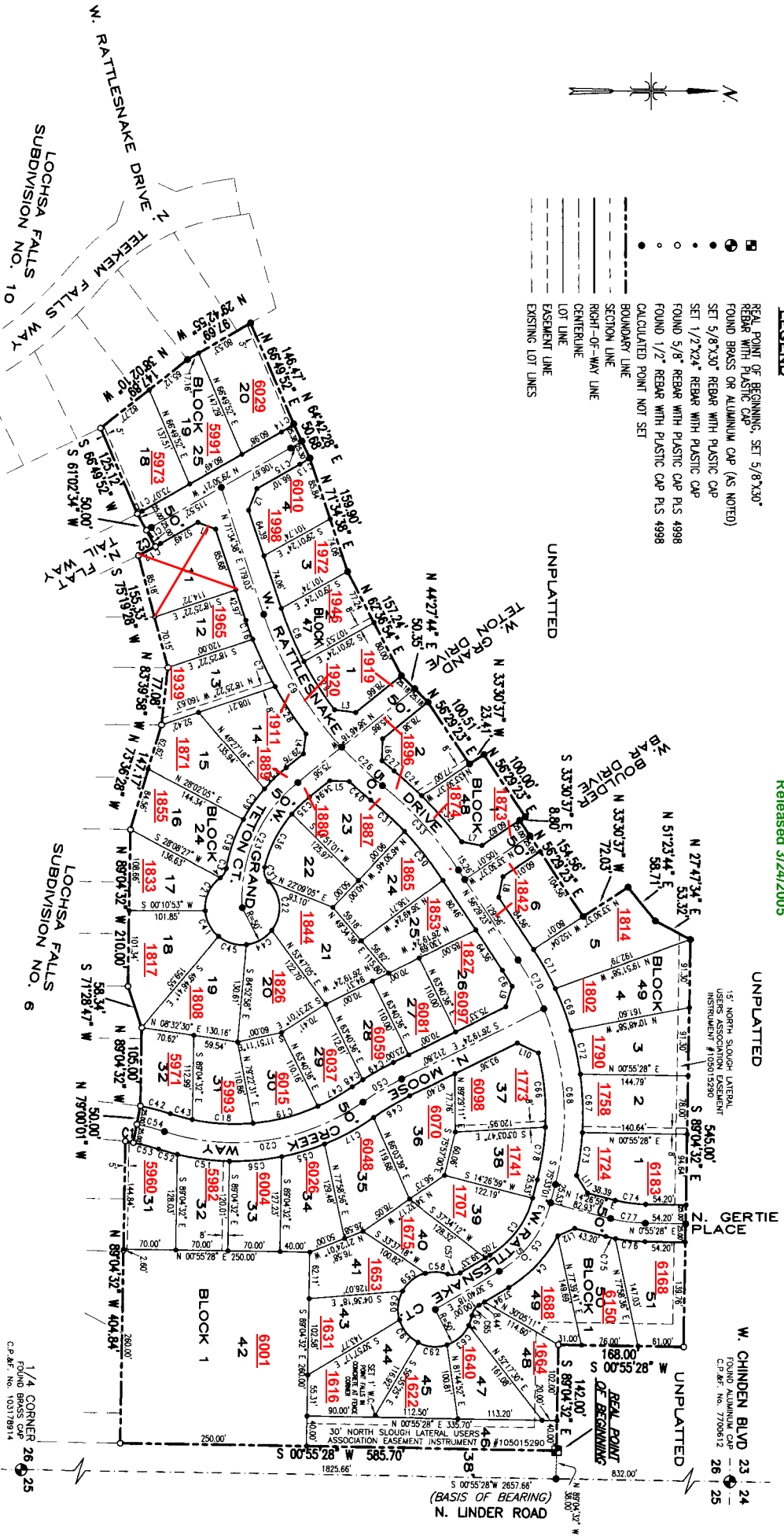
A PORTION OF THE NE 1/4 OF SECTION 26  
T.4N., R.1W., B.M.  
MERIDIAN, ADA COUNTY, IDAHO  
2005



Released 3/24/2005



- LEGEND**
- ◻ REAL POINT OF BEGINNING, SET 5/8"X30" REBAR WITH PLASTIC CAP
  - ◐ FOUND BRASS OR ALUMINUM CAP (AS NOTED)
  - ◉ SET 5/8"X30" REBAR WITH PLASTIC CAP
  - ◊ SET 1/2"X24" REBAR WITH PLASTIC CAP
  - ◈ FOUND 5/8" REBAR WITH PLASTIC CAP PLS 4998
  - ◉ FOUND 1/2" REBAR WITH PLASTIC CAP PLS 4998
  - CALCULATED POINT NOT SET
  - BOUNDARY LINE
  - - - SECTION LINE
  - - - RIGHT-OF-WAY LINE
  - - - CENTERLINE
  - - - LOT LINE
  - - - EASEMENT LINE
  - - - EXISTING LOT LINES



UNPLATTED  
1/4" NORTH SLOUGH LATERAL  
USING NORTH SLOUGH LATERAL  
INSTRUMENT #105015280

UNPLATTED  
W. CHINDEN BLVD 23' 24"  
FOUND ALUMINUM CAP  
C.P. REF. NO. 77080812  
26' 25"

(BASIS OF BEARING)  
N. LINDER ROAD

1/4 CORNER 26' 25"  
FOUND BRASS CAP  
C.P. REF. NO. 103178914



LOCHSA FALLS LLC  
Developer  
Garden City, Idaho

BRIGGS ENGINEERING, INC.  
Consulting Engineers  
Boise, Idaho